

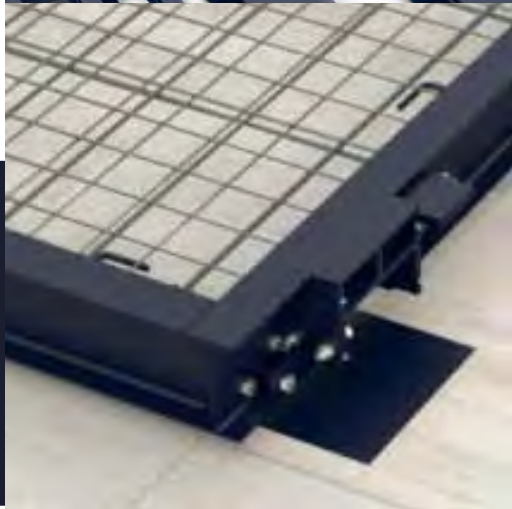
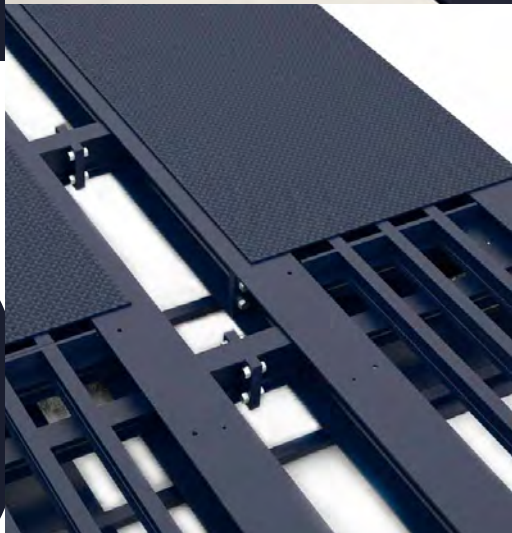
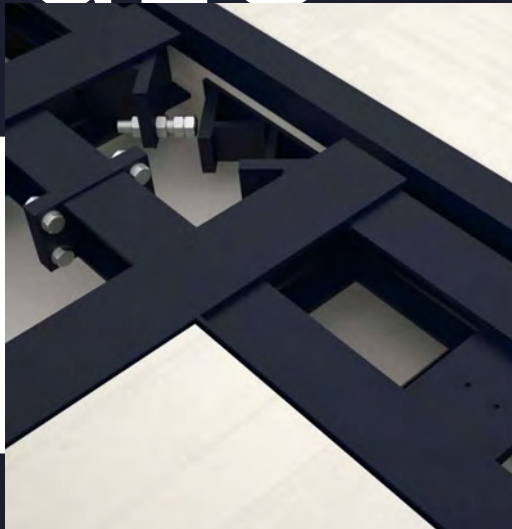


solutions for industrial weighing

WEIGHBRIDGES



NEW R E S





solutions for industrial weighing

INDEX

Weighbridges	
BPGSMX	4
BPPCE	5
BPGMO	6
BPGEM 6x2,70 weighing containers	7
BPPSE	8
BPGSH	9
BPCTH	10
BPGEH	11
BPTSE	12
Light vehicles	
B8C	13
Axle weighing	
BPPE	14
BPPEM	15
Digital cells GIPD and HBM C16i	
16	
Accessories	
PVCE In factory CE verified	17
HBM Scale with analogical cells, C16 model of HBM	17
PSC Weighbridge supply	17
PSC With top sheets for Toledo cells MTX or PDX	17
PSC With bottom sheets for Toledo cells MTX	18
PSC With bottom sheets for Toledo cells PDX	18
PSC Scale with Zemic BM9H cells	18
GV Hot-dip galvanizing for BPPCE/BPPSE	18
GV Cubicles and ramps hot-dip galvanized for BPPCE/BPPSE	18
CBV Cells installed under beam for BPGSMX/BPGSH	18
CV Cubicles BPGSMX/BPGMO/BPTSE	19
CVS-CV8C Simple and large cubicles for BPPCE/BPPSE	19
RP Metal ramps for BPGSMX/BPPCE/BPGMO/BPPSE/BPGSH/BPCTH/BPTSE	19
SC Load cells simulators	19
PAR Height-adjustable anchorage plates	20
CAB Headboards	20
AR Perimeter angle for construction ramps	20
APF Perimeter angle for the ending of the ditch	20
GR Bearing guides for on-ground scales	21
GM Rubber to pit	21



BPGSMX

standard width of 3m

MAIN FEATURES



- > Metal weighbridge.
- > Unidirectional.
- > On-ground installing.
- > High use.
- > Dimensions:
 - With 6 load cells:**
18x3 m, 16x3 m, 14x3 m, 12x3 m.
Maximum nominal capacity: 60.000 kg.
 - With 6 load cells:**
10x3 m, 8x3 m, 6x3 m.
Maximum nominal capacity: 30.000 kg.
- > Height of the rotating area: 290/310 mm.
- > Tear sheet surface of 8/10 mm thick.
- > Necessary access ramps with a slope of 10%.
- > Painting: two component polyurethane paint in blue colour RAL 5004.
- > Screwing of quality 8.8 in zinc (except in screws inferior to M14).

LOAD CELLS



GIP load cell

- > Stainless steel. IP68.
- > 3000 d OIML R60.

Load cells for scales of 6 cells:

- > GIP model of 20 t.

Load cells for scales of 4 cells:

- > GIP model of 15 t.

ELECTRONIC

- > Metal connection box of 4 or 6 connections depending on the dimensions of the scale, with power meters. IP65 Protection.
- > 15 m of cable connection from the scale to the indicator.
- > It is advisable the installation of an earthed landing following instructions M.I.BT039 (not included).

OPTIONS AND ACCESSORIES

Digital load cells

- > Cells GIPD. See the page 16.
- > Cells HBM C16i. See the page 16.

Accessories for the assembly

- > Perimeter angle for the ramps (in and out of on-ground scales).
- > Cubicles (for scales with 4 and 6 cells).
- > Metal ramps.

Special paint

- > Gushed beams and cross-beams, with special paint.
- > Bearing area with sand, to obtain a better grip on the metal scales.

OTHER AVAILABLE ACCESSORIES
LOOK AT PAGE 17

POSSIBLE INDICATORS

Weight-Tare

- > GI308
- > BV510

Alphanumerical

- > GI511PP
- > GI500I
- > GI200
- > GI500SS

REFERENCES

Dimensions Capacity	Number of cells	Height (mm)	Reference with GIP cells
6x3 m 30 t	4	290	BPGSMX.6-GIP
8x3 m 30 t	4	290	BPGSMX.8-GIP
10x3 m 30 t	4	290	BPGSMX.10-GIP
12x3 m 60 t	6	310	BPGSMX.12-GIP
14x3 m 60 t	6	310	BPGSMX.14-GIP
16x3 m 60 t	6	310	BPGSMX.16-GIP
18x3 m 60 t	6	310	BPGSMX.18-GIP

Note: the references do not include the indicator

ACCESSORIES

Description	Reference
Additional meter of cable.	CC.6
Root plates for the scales with 4 load cells.	PA.4
Root plates for the scales with 6 load cells.	PA.6

**MAIN FEATURES**

- > Modular metal weighbridge.
- > Omnidirectional.
- > On-ground and pit assembly.
- > Regimen of use MEDIUM.
- > Dimensions:
 - Maximum nominal capacity: 60.000 kg**
With 8 cells: 18x3 m, 16x3 m and 14x3 m.
 - Maximum nominal capacity: 30.000 kg**
With 6 cells: 10'8x3 m and 8'8x3 m.
 - With 4 cells: 6'6x3 m.
- > Tear sheet surface of 6/8 mm thick.
- > Necessary access ramps with a slope of 10%.
- > Painting: two component polyurethane paint in blue colour RAL 5004.
- > Screwing of quality 8.8 in zinc (except screws inferior M14).

LOAD CELLS**GIP load cell**

- > Stainless steel. IP68.
- > 3000 d OIML R60.

Load cells for scales of 6 cells:

- > GIP model of 20 t.

Load cells for scales of 30 t:

- > GIP model of 15 t.

ELECTRONIC

- > Metal connection box with 8 connections depending on the dimensions of the scale, with potentiometers. IP65 Protection.
- > 15 m of cable connection from the scale to the indicator.
- > It is advisable the installation of an earthed landing following instructions M.I.BT039 (not included).

OPTIONS AND ACCESSORIES**Digital load cells.**

- > Cells GIPD. See the page 16.
- > Cells HBM C16i. See the page 16.

Accessories for the assembly.

- > **Perimeter angle for the ramps** (in and out of on-ground scales).
- > **Perimeter angle for the ending of the ditch** (pit scales).
- > **Headboards**. To lean the access ramps.
- > **Metal ramps**, of 1000 mm of thickness.
- > **Metal ramps**, of 1500 mm of thickness.

Cubicles for BPPCE

- > **Simple cubicle.**
- > **Large cubicle** (with cells assembled in the factory).

Accessories for the structure.

- > **Bearing guides**. To guide the vehicle.

Special paint.

- > **Gushed beams and cross-beams**, with special paint.

POSSIBLE INDICATORS**Weight-Tare**

- > GI308
- > BV510

Alphanumerical

- > GI511PP
- > GI500I
- > GI200
- > GI500SS

REFERENCES

Dimensions Capacity	Actual Length (mm)	Number of cells	Height (mm)	Reference with GIP cells
6 x 3 m 30 t	6610 x 3000	4	310	BPPCE.6.GIP
8 x 3 m 30 t	8800 x 3000	6	310	BPPCE.8.GIP
10 x 3 m 30 t	10800 x 3000	6	310	BPPCE.10.GIP
12 x 3 m 60 t	11800 x 3000	6	310	BPPCE.12.GIP
14 x 3 m 60 t	14000 x 3000	8	310	BPPCE.14.GIP
16 x 3 m 60 t	16000 x 3000	8	310	BPPCE.16.GIP
18 x 3 m 60 t	18000 x 3000	8	310	BPPCE.18.GIP

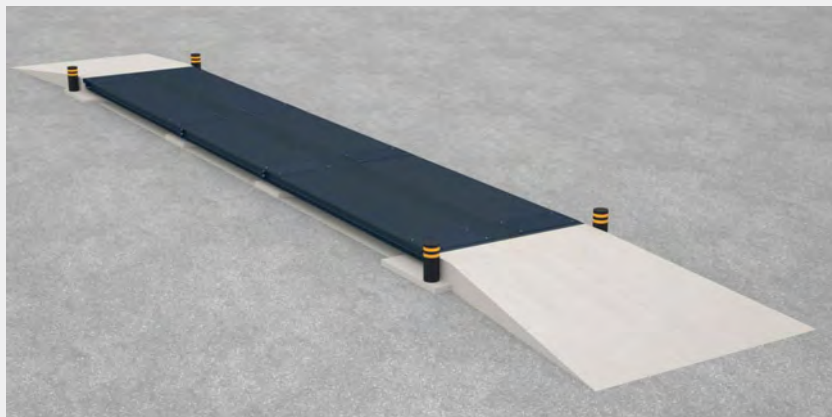
ACCESSORIES

Description	Reference
Additional meter of cable.	CC.6
Root plates for the scales with 4 load cells.	PA.4
Root plates for the scales with 6 load cells.	PA.6
Root plates for the scales with 8 load cells.	PA.8



MAIN FEATURES

- > Modular metal weighbridge.
- > Omnidirectional.
- > With central sheet to be access.
- > On-ground and pit assembly.
- > Regimen of use: HIGH.
- > With 4, 6 and 8 Load cells.
- > Maximum nominal capacity: 60.000 kg.
- > Dimensions:
 - Maximum nominal capacity: 60.000 kg**
 - With 8 load cells: 18x3 m, 16x3 m, 14x3 m.
 - With 6 load cells: 12x3 m.
 - Maximum nominal capacity: 30.000 kg**
 - With 6 load cells: 10x3 m, 8x3 m.
 - With 6 load cells: 6x3 m.
- > Tear sheet surface of 6/8 mm. thick.
- > Necessary access ramps with a slope of 10%.
- > Painting: 1 coat of anticorrosion paint based on polyvinyl butyral (PVB) and 1 coat of 1 coat of urethane alkyd resin, super gloss, RAL 5004.
- > Screwing of quality 8.8 in zinc (except screws inferior M14).



LOAD CELLS



- GIP load cell**
- > Stainless steel. IP68.
 - > 3000 d OIML R60.

- Load cells for scales of 60 t:**
- > GIP model of 20 t.
- Load cells for scales of 30 t:**
- > GIP model of 15 t.

ELECTRONIC

- > Metal connection box with 8 connections depending on the dimensions of the scale, with potentiometers. IP65 Protection.
- > 15 m of cable connection from the scale to the indicator.
- > It is advisable the installation of an earthed landing following instructions M.I.BT039 (not included).

OPTIONS AND ACCESSORIES

Digital load cells

- > Cells GIPD. See the page 16.
- > Cells HBM C16i. See the page 16.

Accessories for the assembly

- > Perimeter angle for the ramps (in and out of on-ground scales).
- > Perimeter angle for the ending of the ditch (pit scales).
- > Cubicles.
- > Headboards. To lean the access ramps.
- > Metal ramps.

Accessories for the structure.

- > Bearing guides. To guide the vehicle.

Special paint.

- > Gushed beams and cross-beams, with special paint.

OTHER AVAILABLE ACCESSORIES

LOOK AT PAGE 17

POSSIBLE INDICATORS

- | Weight-Tare | Alphanumeric |
|-------------|--------------|
| > GI308 | > GI511PP |
| > BV510 | > GI500I |
| | > GI200 |
| | > GI500SS |

REFERENCES

Dimensions Capacity	Number of cells	Height (mm)	Reference with GIP cells
6 x 3 m 30 t	4	330	BPGMO.6.GIP
8 x 3 m 30 t	6	330	BPGMO.8.GIP
10 x 3 m 30 t	6	330	BPGMO.10.GIP
12 x 3 m 60 t	6	330	BPGMO.12.GIP
14 x 3 m 60 t	8	330	BPGMO.14.GIP
16 x 3 m 60 t	8	330	BPGMO.16.GIP
18 x 3 m 60 t	8	330	BPGMO.18.GIP

Note: the references do not include the indicator

ACCESSORIES

Description	Reference
Additional meter of cable.	CC.6
Root plates for the scales with 4 load cells.	PA.4
Root plates for the scales with 6 load cells.	PA.6
Root plates for the scales with 8 load cells.	PA.8



BPGEM

6x2,7m. weighing containers

MAIN FEATURES



← Fully assembled and working scale.

← Set of scales in its location. It lacks to place the protection plate.

- > Metal weighbridge, type BPGEM designed to weigh containers.
- > Unidirectional.
- > On-ground assembly.
- > Regime of use: HIGH.
- > **4 load cells.**
Nominal capacity: 30.000 kg
- > Weighing surface dimensions: 6 x 2,70 m.
- > Height of the rotating area: 350 mm.
- > Flat sheet area 10 mm thick.
- > All the scale surface is weighing surface.
- > The container supports on all the weighing surface.
- > Central metallic guide to help to place the container on the scale.
- > The zone of tread and support of the container is reinforced with beams to avoid the deformation of the plate.
- > Limit at the end of the scale to avoid the exit of the container when it is placed on.
- > The load cells are placed inside the scale. This way the load cells are protected of the dirt.
- > Installation on a metallic base for a fast installation. The bridge and the metallic base are provided like a single set that does not require special transport. To install, to fix and to weigh.
- > Painting: two component polyurethane paint in blue colour RAL 5004.
- > Screwing of quality 8.8 in zinc (except screws inferior M14).

LOAD CELLS



GIP load cell

- > Stainless steel. IP68.
- > 3000 d OIML R60.

Load cells for scales of 8 cells:

- > GIP model of 20 t.

ELECTRONIC

- > Metal connection box of 4 connections depending on the dimensions of the scale, with power meters. IP65 Protection.
- > 15 m of cable connection from the scale to the indicator.
- > It is advisable the installation of an earthed landing following instructions M.I.BT039 (not included).

OPTIONS AND ACCESSORIES

Digital load cells.

- > Cells GIPD. See the page 16.
- > Cells HBM C16i. See the page 16.

Special paint.

- > Gushed beams and cross-beams, with special paint.

OTHER AVAILABLE ACCESSORIES

LOOK AT PAGE 17

POSSIBLE INDICATORS

Weight-Tare

- > GI308
- > BV510

Alphanumerical

- > GI511PP
- > GI500I
- > GI200
- > GI500SS

REFERENCES

Dimensions Capacity	Number of cells	Height (mm)	Reference with GIP cells
6 x 2,7 m 30 t	4	350	BPGEM.627-GIP

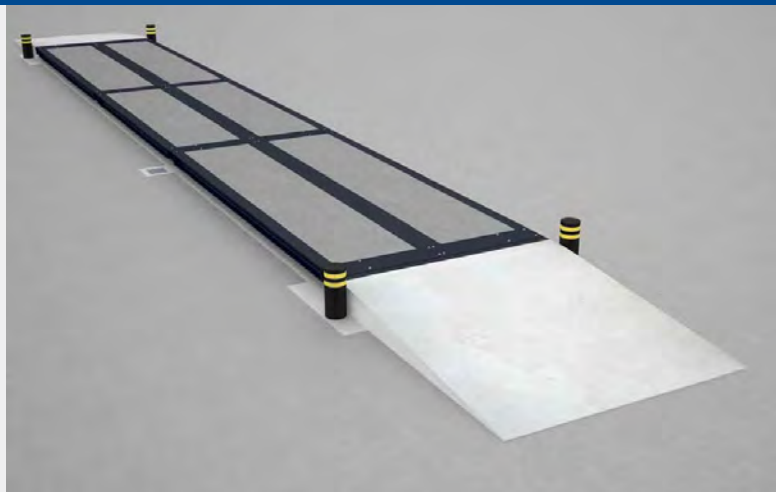
Note: the references do not include the indicator

ACCESSORIES

Description	Reference
Additional meter of cable.	CC.6

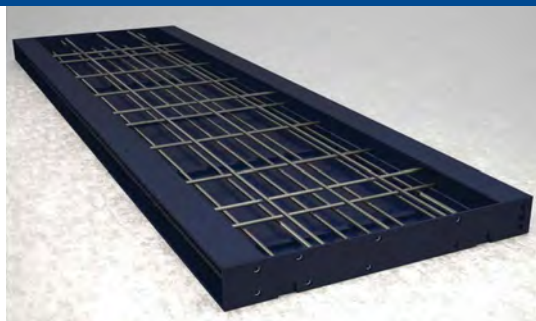
MAIN FEATURES

- > Modular concrete weighbridge.
- > Omnidirectional.
- > On-ground and pit assembly.
- > Regimen of use MEDIUM.
- > Three different versions:
 - Standard version (BPPSE)
 - Version with metal formwork (BPPSEC)
 - In factory pre/cast concrete (BPPSEH)
- > Dimensions:
 - Maximum nominal capacity: 30.000 kg**
With 4 cells: 6'6x3 m.
With 6 cells: 8'8x3 m and 10'8x3m.
 - Maximum nominal capacity: 60.000 kg**
With 6 cells: 11'8x3m.
With 8 cells: 18x3 m, 16x3 m and 14x3 m.
- > Necessary access ramps with a slope of 10%.
- > Painting: two component polyurethane paint in blue colour RAL 5004.
- > Screwing of quality 8.8 in zinc (except screws inferior M14).



BPPSE VERSIONS

- > **BPPSE**
Standard version. This scale is served along with a plastic for formwork concrete pouring. The structure is mounted and the concrete is poured into the cast on the floor and once the concrete dries and completely hardens it can be lifted completely.
- > **BPPSEC**
Version with metal formwork. This version is supplied with metal formwork welded to the platform for concrete pouring. The weighbridge can be concreted mounted on its final height.
- > **BPPSEH (Option: verified from factory delivery)**
In factory pre-cast concrete. In factory pre-cast concrete. This version comes with structure assembled and concrete ready cast in factory, saving costs and time for drying, so it is possible to start weighing on the very same day the installation is completed.



Détail d'un module longitudinal avec coffrage métallique.

LOAD CELLS



- GIP load cell**
- > Stainless steel. IP68.
 - > 3000 d OIML R60.

- Load cells for scales of 60 t:**
- > GIP model of 20 t.
- Load cells for scales of 30 t:**
- > GIP model of 15 t.

ELECTRONIC

- > Metal connection box with 8 connections depending on the dimensions of the scale, with potentiometers. IP65 Protection.
- > 15 m of cable connection from the scale to the indicator.
- > It is advisable the installation of an earthed landing following instructions M.I.BT039 (not included).

OPTIONS AND ACCESSORIES

Digital load cells.

- > Cells GIPD.
- > Cells HBM C16i.

Accessories for the assembly.

- > **Perimeter angle for the ramps** (in and out of on-ground scales).
- > **Perimeter angle for the ending of the ditch** (pit scales).
- > **Headboards.** To lean the access ramps.
- > **Metal ramps**, of 1000 mm of thickness.
- > **Metal ramps**, of 1500 mm of thickness.

Cubicles for BPPSE

- > **Simple cubicle**
- > **Large cubicle** (optional with cells assembled in the factory).

Accessories for the structure.

- > **Bearing guides.** To guide the vehicle.

Special paint.

- > **Gushed beams and cross-beams**, with special paint.

POSSIBLE INDICATORS

Weight-Tare

- > GI308
- > BV510

Alphanumerical

- > GI511PP
- > GI5001
- > GI200
- > GI500SS

REFERENCES

Dimensions Capacity	Actual Length (mm)	Number of cells	Hauteur (mm)	BPPSE	BPPSEC	BPPSEH
				Reference with GIP cells	Reference with GIP cells	Reference with GIP cells
6x3 m 30 t	6610x3000	4	310	BPPSE.6.GIP	BPPSEC.6.GIP	BPPSEH.6.GIP
8x3 m 30 t	8800x3000	6	310	BPPSE.8.GIP	BPPSEC.8.GIP	BPPSEH.8.GIP
10x3 m 30 t	10800x3000	6	310	BPPSE.10.GIP	BPPSEC.10.GIP	BPPSEH.10.GIP
12x3 m 60 t	11800x3000	6	310	BPPSE.12.GIP	BPPSEC.12.GIP	BPPSEH.12.GIP
14x3 m 60 t	14000x3000	8	310	BPPSE.14.GIP	BPPSEC.14.GIP	BPPSEH.14.GIP
16x3 m 60 t	16000x3000	8	310	BPPSE.16.GIP	BPPSEC.16.GIP	BPPSEH.16.GIP
18x3 m 60 t	18000x3000	8	310	BPPSE.18.GIP	BPPSEC.18.GIP	BPPSEH.18.GIP

(optional verified in factory, consult page 17)

ACCESSORIES

- | Description | Reference |
|---|-----------|
| Additional meter of cable. | CC.6 |
| Root plates for the scales with 8 load cells. | PA.8 |

**MAIN FEATURES**

- > Concrete weighbridge.
- > Unidirectional.
- > On-ground assembly.
- > Regimen of use HIGH.
- > Dimensions:
 - With 8 load cells:**
18x3 m.
Maximum nominal capacity: 60.000 kg.
 - With 6 load cells:**
18x3 m, 16x3 m, 14x3 m, 12x3 m.
Maximum nominal capacity: 60.000 kg.
 - With 4 load cells:**
10x3 m, 8x3 m, 6x3 m.
Maximum nominal capacity: 30.000 kg.
- > Height of the bearing area: 290 mm.
- > Necessary access ramps with a slope of 10%.
- > Painting: two component polyurethane paint in blue colour RAL 5004.
- > Screwing of quality 8.8 in zinc (except screws inferior M14).
- > Formwork with plastic.
- > The weighbridge rebar reinforcement is supplied with the weighbridge.

LOAD CELLS**GIP load cell**

- > Stainless steel. IP68.
- > 3000 d OIML R60.

Load cells for scales of 8 cells:

- > **GIP** model of 20 t.

Load cells for scales of 6 cells:

- > **GIP** model of 25 t.

Load cells for scales of 4 cells:

- > **GIP** model of 20 t.

ELECTRONIC

- > Metal connection box of 4, 6 and 8 connections depending on the dimensions of the scale, with power meters. IP65 protection.
- > 15 m of cable connection from the scale to the indicator.
- > It is advisable the installation of an earthed landing following instructions M.I.BT039 (not included).

OPTIONS AND ACCESSORIES**Digital load cells.**

- > Cells GIPD. See the page 16.
- > Cells HBM C16i. See the page 16.

Accessories for the assembly.

- > **Perimeter angle for the ramps** (in and out of on-ground scales).
- > **Metal ramps.**

Special paint.

- > **Gushed beams and cross-beams**, with special paint.

OTHER AVAILABLE ACCESSORIES

LOOK AT PAGE 17

POSSIBLE INDICATORS**Weight-Tare**

- > GI308
- > BV510

Alphanumerical

- > GI511PP
- > GI500I
- > GI200
- > GI500SS

REFERENCES

Dimensions Capacity	Number of cells	Height (mm)	Reference with GIP cells
6 x 3 m 30 t	4	290	BPGSH.6-GIP
8 x 3 m 30 t	4	290	BPGSH.8-GIP
10 x 3 m 30 t	4	290	BPGSH.10-GIP
12 x 3 m 60 t	6	290	BPGSH.12-GIP
14 x 3 m 60 t	6	290	BPGSH.14-GIP
16 x 3 m 60 t	6	290	BPGSH.16-GIP
18 x 3 m 60 t	6	290	BPGSH.18.6-GIP
18 x 3 m 60 t	8	290	BPGSH.18.8-GIP

Note 1: the references do not include the concrete on the platform.

Note 2: the references do not include the indicator.

ACCESSORIES

Description	Reference
Additional meter of cable.	CC.6
Root plates for the scales with 4 load cells.	PA.4
Root plates for the scales with 6 load cells.	PA.6
Root plates for the scales with 8 load cells.	PA.8



BPCTH

 width of 3,30 m


- > Painting: two component polyurethane paint in blue colour RAL 5004.
- > Screwing of quality 8.8 in zinc (except screws inferior M14).
- > Formwork with plastic.
- > The weighbridge rebar reinforcement is supplied with the weighbridge.

MAIN FEATURES

- > Concrete weighbridge.
- > Omnidirectional.
- > On-ground assembly.
- > Regimen of use HIGH.
- > Dimensions:
 - With 8 load cells:**
18x3,30 m, 16x3,30 m. and 14x3,30 m.
Maximum nominal capacity: 60.000 kg.
 - With 6 load cells: 12x3,30 m.**
Maximum nominal capacity: 60.000 kg.
 - With 6 load cells: 8x3,30 m, 10x3,30 m.**
Maximum nominal capacity: 30.000 kg.
 - With 4 load cells: 6x3,30 m.**
Maximum nominal capacity: 30.000 kg.
- > Height of the rotating area: 340 mm.
- > Treat surface completely flat, without laterañ beams as guide.
- > Composed by 3 concrete modules inside an IPE-270 frame.
- > Longitudinal and transversal ø20 mm. rebars to avoid the beams opening.
- > Rebar mesh 150x150x10 mm.
- > The ø20 mm. rebars and the rebar mesh are included with our provision.
- > Necessary access ramps with a slope of 10%.

LOAD CELLS



GIP load cell

- > Stainless steel. IP68.
- > 3000 d OIML R60.

Load cells for scales of 8 cells:

- > GIP model of 20 t.

ELECTRONIC

- > Metal connection box with 8 connections, with potentiometers. IP65 Protection..
- > 15 m of cable connection from the scale to the indicator.
- > It is advisable the installation of an earthed landing following instructions M.I.BT039 (not included).

OPTIONS AND ACCESSORIES

Digital load cells.

- > Cells GIPD. See the page 16.
- > Cells HBM C16i. See the page 16.

Accessories for the assembly.

- > Perimeter angle for the ramps (in and out of on-ground scales).
- > Metal ramps.

Special paint.

- > Gushed beams and cross-beams.

OTHER AVAILABLE ACCESSORIES

LOOK AT PAGE 17

POSSIBLE INDICATORS

Weight-Tare

- > GI308
- > BV510

Alphanumerical

- > GI511PP
- > GI500I
- > GI200
- > GI500SS

REFERENCES

Dimensions Capacity	Number of cells	Height (mm)	Reference with GIP cells
6 x 3,30 m 60 t	4	340	BPCTH.6-GIP
8 x 3,30 m 60 t	6	340	BPCTH.8-GIP
10 x 3,30 m 60 t	6	340	BPCTH.10-GIP
12 x 3,30 m 60 t	6	340	BPCTH.12-GIP
14 x 3,30 m 60 t	8	340	BPCTH.14-GIP
16 x 3,30 m 60 t	8	340	BPCTH.16-GIP
18 x 3,30 m 60 t	8	340	BPCTH.18-GIP

Note 1: the references do not include the concrete on the platform.

Note 2: the references do not include the indicator.

ACCESSORIES

Description	Reference
Additional meter of cable	CC.6
Root plates for the scales with 4 load cells.	PA.4
Root plates for the scales with 6 load cells.	PA.6
Root plates for the scales with 8 load cells.	PA.8



MAIN FEATURES

- > Concrete Weighbridge.
- > Omnidirectional.
- > On-ground and pit assembly.
- > Regimen of use MEDIUM-HIGH.
- > Dimensions:
 - With 8 load cells:**
18x3 m, 16x3 m, 14x3 m, 12x3 m.
Maximum nominal capacity: 60.000 kg.
 - With 6 load cells:**
10x3 m, 8x3 m.
Maximum nominal capacity: 30.000 kg.
 - With 6 load cells:**
6x3 m.
Maximum nominal capacity: 30.000 kg.
- > Height of the bearing area: 370 mm.
- > Necessary access ramps with a slope of 10%.
- > Painting: two component polyurethane paint in blue colour RAL 5004.
- > Screwing of quality 8.8 in zinc (except screws inferior to M14).
- > Formwork with plastic.
- > The weighbridge rebar reinforcement is supplied with the weighbridge.

LOAD CELLS



GIP load cell

- > Stainless steel. IP68.
- > 3000 d OIML R60.

Load cells for scales of 8 cells:

- > GIP model of 20 t.

Load cells for scales of 6 cells:

- > GIP model of 15 t.

Load cells for scales of 4 cells:

- > GIP model of 15 t.

ELECTRONIC

- > Metal connection box of 4 or 6 connections depending on the dimensions of the scale, with power meters. IP65 Protection.
- > 15 m of cable connection from the scale to the indicator.
- > It is advisable the installation of an earthed landing following instructions M.I.BT039 (not included).

OPTIONS AND ACCESSORIES

Digital load cells.

- > Cells GIPD. See the page 16.
- > Cells HBM C16i. See the page 16.

Accessories for the assembly.

- > Perimeter angle for the ramps (in and out of on-ground scales).
- > Perimeter angle for the ending of the ditch (pit scales).

Accessories for the structure.

- > Bearing guides. To guide the vehicle.

Special paint.

- > Gushed beams and cross-beams, with special paint.

OTHER AVAILABLE ACCESSORIES

LOOK AT PAGE 17

POSSIBLE INDICATORS

Weight-Tare

- > GI308
- > BV510

Alphanumerical

- > GI511PP
- > GI500I
- > GI200
- > GI500SS

REFERENCES

Dimensions Capacity	Number of cells	Height (mm)	Reference with GIP cells
6 x 3 m 30 t	4	370	BPGEH.6.GIP
8 x 3 m 30 t	6	370	BPGEH.8.GIP
10 x 3 m 30 t	6	370	BPGEH.10.GIP
12 x 3 m 60 t	8	370	BPGEH.12.GIP
14 x 3 m 60 t	8	370	BPGEH.14.GIP
16 x 3 m 60 t	8	370	BPGEH.16.GIP
18 x 3 m 60 t	8	370	BPGEH.18.GIP

Note 1: the references do not include the concrete on the platform.

Note 2: the references do not include the indicator.

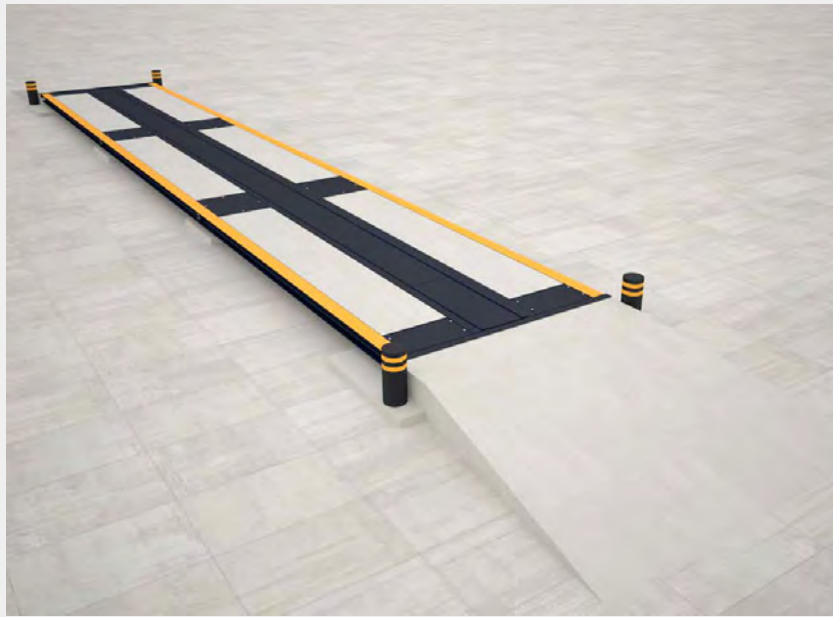
ACCESSORIES

Description	Reference
Additional meter of cable	CC.6
Root plates for the scales with 4 load cells.	PA.4
Root plates for the scales with 6 load cells.	PA.6
Root plates for the scales with 8 load cells.	PA.8



BPTSE

with concrete worked in factory



MAIN FEATURES

- > Concrete Weighbridge.
- > Modular scale with concrete worked in factory. To install the scale and start to weigh on the same day.
- > Concrete HA-30.
- > Easy transportation and installation.
- > Omnidirectional.
- > To be installed on-ground and pit assembly.
- > Regimen of use HIGH.
- > With central sheet to access inside the platform.
- > Dimensions:
 - With 8 load cells:**
18x3 m, 16x3 m, 14x3 m.
Maximum nominal capacity: 60.000 kg.
 - With 6 load cells:**
12x3 m.
Maximum nominal capacity: 60.000 kg.
 - 10x3 m, 8x3 m.**
Maximum nominal capacity: 30.000 kg.
 - With 4 load cells:**
6x3 m.
Maximum nominal capacity: 60.000 kg.
- > Height of the bearing area 300 mm.
- > Necessary access ramps with a slope of 10%.
- > Painting: two component polyurethane paint in blue colour RAL 5004.
- > Screwing of quality 8.8 in zinc (except screws inferior to M14).

LOAD CELLS



GIP load cell

- > Stainless steel. IP68.
- > 3000 d OIML R60.

Load cells for scales of 60 t:

- > GIP model of 30 t.

Load cells for scales of 30 t:

- > GIP model of 20 t.

ELECTRONIC

- > Metal connection box of 4, 6 or 8 connections depending on the dimensions of the scale, with power meters. IP65 Protection.
- > 15 m of cable connection from the scale to the indicator.
- > It is advisable the installation of an earthed landing following instructions M.I.BT039 (not included).

OPTIONS AND ACCESSORIES

Digital load cells.

- > Cells GIPD. See the page 16.
- > Cells HBM C16i. See the page 16.

Accessories for the assembly.

- > Perimeter angle for the ramps (in and out of on-ground scales).
- > Perimeter angle for the ending of the ditch (pit scales).

Accessories for the structure.

- > Bearing guides. To guide the vehicle.

Special paint.

- > Gushed beams and cross-beams, with special paint.

OTHER AVAILABLE ACCESSORIES

LOOK AT PAGE 17

POSSIBLE INDICATORS

Weight-Tare

- > GI308
- > BV510

Alphanumerical

- > GI511PP
- > GI5001
- > GI200
- > GI500SS

REFERENCES

Dimensions Capacity	Number of cells	Height (mm)	Reference with GIP cells
6 x 3 m 30 t	4	300	BPTSE.6-GIP
8 x 3 m 30 t	6	300	BPTSE.8-GIP
10 x 3 m 30 t	6	300	BPTSE.10-GIP
12 x 3 m 60 t	6	300	BPTSE.12-GIP
14 x 3 m 60 t	8	300	BPTSE.14-GIP
16 x 3 m 60 t	8	300	BPTSE.16-GIP
18 x 3 m 60 t	8	300	BPTSE.18-GIP

Note: the references do not include the indicator.

ACCESSORIES

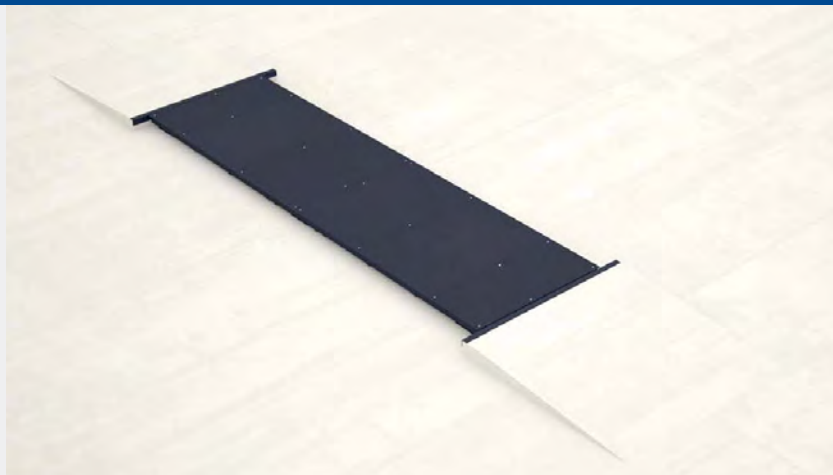
Description	Reference
Additional meter of cable.	CC.6
Root plates for the scales with 4 load cells.	PA.4
Root plates for the scales with 6 load cells.	PA.6
Root plates for the scales with 8 load cells.	PA.8



B8C pesa furgonetas

MAIN FEATURES

- > Weighbridges for light vehicles (vans).
- > Omnidirectional.
- > On-ground and pit assembly.
- > With 4 and 6 load cells.
- > Dimensions:
 - Capacities: 6.000 and 10.000 kg.**
5x2,3 m, 5x2,5 m, 6x2,3 m; 6x2,5m.
 - Capacities: 10.000 and 15.000 kg.**
8x2,3 m, 8x2,5 m.
- > Surface in diamond sheet of 6/8 mm thick.
- > Necessary access ramps with 10% maximum slope.
- > Painting: 1 coat of anticorrosion paint based on polyvinyl butyral (PVB) and 1 coat of 1 coat of urethane alkyd resin, super gloss, RAL 5004.
- > Screwing of quality 8.8 in zinc (except screws inferior M14).



LOAD CELLS



GI35a load cell.

- > Stainless steel. IP66.
- > 3000 d OIML R60.

Load cells for scales of 6.000kg.

- > G35a of 3.000kg.

Load cells for scales of 10.000kg.

- > G35a of 5.000kg.

Load cells for scales of 15.000kg.

- > G35a of 5.000kg.

ELECTRONIC

- > 2 metal connection boxes with 4 connections depending on the dimensions of the scale, with potentiometers. IP65 Protection.
- > 10 m of cable connection from the scale to the indicator.
- > It is advisable the installation of an earthed landing following instructions M.I.BT039 (not included).

OPTIONS AND ACCESSORIES

Accessories for the assembly.

- > Perimeter angle for the ramps (in and out of on-ground scales).
- > Perimeter angle for the ending of the ditch (pit scales).
- > Metal ramps.

Special paint.

- > Gushed beams and cross-beams, with special paint.

OTHER AVAILABLE ACCESSORIES

LOOK AT PAGE 17

POSSIBLE INDICATORS

Weight-Tare

- > GI308
- > BV510

Alphanumerical

- > GI511PP
- > GI500I
- > GI200
- > GI500SS

REFERENCES

Dimensions	Capacity (t)	Number of cells	Height (mm)	Reference
5 x 2,3 m	6	4	200	B8C5000
5 x 2,3 m	10	4	200	B8C5001
5 x 2,5 m	6	4	200	B8C5002
5 x 2,5 m	10	4	200	B8C5003
6 x 2,3 m	6	4	200	B8C6000
6 x 2,3 m	10	4	200	B8C6001
6 x 2,5 m	6	4	200	B8C6002
6 x 2,5 m	10	4	200	B8C6003
8 x 2,3 m	10	6	200	B8C8000
8 x 2,3 m	15	6	200	B8C8001
8 x 2,5 m	10	6	200	B8C8002
8 x 2,5 m	15	6	200	B8C8003

Note: the references do not include the indicator.

ACCESSORIES

Description	Reference
Perimeter angle for the concrete ramps for weighbridges of 2,3 m width.	B8C1000
Perimeter angle for the concrete ramps for weighbridges of 2,5 m width.	B8C1001
	5 x 2,3 m
	5 x 2,5 m
Perimeter angle for the ending of the ditch.	6 x 2,3 m
	6 x 2,5 m
	8 x 2,3 m
	8 x 2,5 m
Metallic ramps for weighbridges of 2,3 m width (entering and exit set).	B8C1010
Metallic ramps for weighbridges of 2,5 m width (entering and exit set).	B8C1011
Verification approval	GCE-600115000



BPPE

MAIN FEATURES

- > Axle weighing metal scale.
- > Pit assembly.
- > Dimensions (weighing area):
With 4 load cells
 3x1 m, 3x1,5 m.
Maximum nominal capacity: 15.000 kg.
- > Depth of the ditch: 450/480 mm.
- > Painting: two component polyurethane paint in blue colour RAL 5004.
- > Screwing of quality 8.8 in zinc (except screws inferior to M14).



LOAD CELLS



G75 load cell.

- > Special steel, anticorrosive treatment of epoxy paint.
- > IP68.3000 d OIML R60

Load cells for scales of 4 cells:

- > Scales with capacity of 15.000 kg.
- > Model **G75** de 7,5 t.

ELECTRONIC

- > Boîte de jonction en ABS avec 4 conexiones avec potentiomètres. Protection IP65.
- > 15 m of cable connection from the scale to the indicator.

POSSIBLE INDICATORS

- | Weight-Tare | Alphanumerical |
|-------------|----------------|
| > GI308 | > GI511PP |
| > BV510 | > GI500I |
| | > GI200 |
| | > GI500SS |

REFERENCES

Capacity	Dimensions	Number of cells	Height (mm)	Reference
15.000 kg	3 x 1 m	4	450	BPPE.31
	3 x 1,5 m	4	450	BPPE.315

Note: the references do not include the indicator.

ACCESSORIES

Description	Reference
Additional meter of cable	CC.6

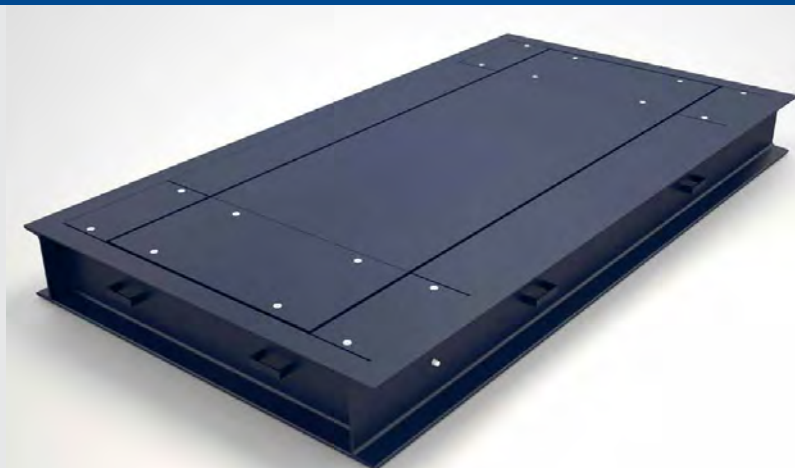


BPPEM

axle weighing with perimeter frame

MAIN FEATURES

- > Bascule pèse essieux métallique.
- > Scale supplied with flat sheet of 10 mm. (optional with tear sheet of 8/10 mm.)
- > Pit assembly.
- > With perimeter frame included.
- > Dimensions (weighing area):
With 4 load cells
3x0,75 m., 3x1 m., 3x1,5 m.
- > Maximum nominal capacity:
15.000 kg, 30.000 kg, 40.000 kg
- > Depth of the ditch (depending of model and capacity):
from 270 mm to 330 mm.
- > Painting: two component polyurethane paint in blue colour RAL 5004.
- > Screwing of quality 8.8 in zinc (except screws inferior to M14).
- > Optional: CE factory verification when buying an homologated indicator.



LOAD CELLS



GIP load cell

- > Stainless steel. IP68.
- > 3000 d OIML R60.

Load cells for scales of 15.000 kg:

- > GIP model of 15 t.

Load cells for scales of 30.000 kg:

- > GIP model of 20 t.

Load cells for scales of 40.000 kg:

- > GIP model of 30 t.

ELECTRONIC

- > Metal connection box of 4 connections with power meters. IP65 protection.
- > 15 m of cable connection from the scale to the indicator.

POSSIBLE INDICATORS

- | Weight-Tare | Alphanumerical |
|-------------|----------------|
| > GI308 | > GI511PP |
| > BV510 | > GI500I |
| | > GI200 |
| | > GI500SS |

REFERENCES

Capacity	Dimensions	Number of cells	Height (mm)	Reference with GIP cells
15.000 kg	3 x 0,75 m	4	270	BPPEM.3000
30.000 kg	3 x 0,75 m	4	310	BPPEM.3001
40.000 kg	3 x 0,75 m	4	330	BPPEM.3002
15.000 kg	3 x 1 m	4	270	BPPEM.3005
30.000 kg	3 x 1 m	4	310	BPPEM.3006
40.000 kg	3 x 1 m	4	330	BPPEM.3007
15.000 kg	3 x 1,5 m	4	270	BPPEM.3010
30.000 kg	3 x 1,5 m	4	310	BPPEM.3011
40.000 kg	3 x 1,5 m	4	330	BPPEM.3012

Note: the references do not include the indicator.

ACCESSORIES

Description	Reference
Additional meter of cable.	CC.6
In factory CE approval.	GCE.BPPEM
Tear sheet of 8/10 mm. for 3x0,75 m axle weighing.	BPPEM3500
Tear sheet of 8/10 mm. for 3x1 m axle weighing.	BPPEM3501
Tear sheet of 8/10 mm. for 3x1,5 m axle weighing.	BPPEM3502



digital cells GIPD and HBM C16i

GIPD

All the weighbridges and the axle weighing BPEM can use digital cells GIPD model with the indicator GI500

MAIN FEATURES



- > Digital load cell with compression of self-aligning pivotal column.
- > Capacities of 15 t, 30 t, 40 t and 60 t.
- > 4000 divisions OIML R60.
- > Building in stainless steel.
- > Hermetically welded, protection IP68 (EN60529).
- > Protected against lighting.
- > Digital output RS-485.
- > Software setting and updating through the interface series.
- > Advantages in starting, adjustment of corners and individual diagnostic.

MAIN FEATURES

Indicator GI500



- > Electronic indicator to use with digital weighing.
- > Follows the rules.
- > EN45 501.
- > Graphic Display.
- > Stainless steel housing.
- > Excitation through red adaptor, integrated in the housing.
- > Alphanumerical keyboard of membrane.
- Software Functions**
 - > Zero.
 - > Tare.
 - > Date/Hour.
 - > Password.
 - > References File.
 - > Number plate Files.
 - > Management of weighing.
 - > Memorized Tares.
 - > Management in ways of traffic.
- > PC connection.
- > Printing with external printer.
- > Badge / button.
- > Control of traffic lights.
- > I/O.
- > Alibi Memory.
- > Ethernet.
- > Programming of input and output conditions.

REFERENCES

Combination of digital elements

Digital cells GIPD model with the indicator GI500. For scales of 4 cells.

Digital cells GIPD model with the indicator GI500. For scales of 6 cells.

Digital cells GIPD model with the indicator GI500. For scales of 8 cells.

Price: The indicated references must be added to the total cost of all scales with GIP references that agree with the number of load cells.

Reference

GIPD.4

GIPD.6

GIPD.8

HBM C16i

All the weighbridges and the axle weighing BPEM can be used with the digital cells HBM C16i model with the indicator GI500

MAIN FEATURES



- > Digital load cell with compression of self-aligning pivotal column.
- > Capacities of 20 t, 30 t, 40 t and 60 t.
- > 3000 divisions OIML R60.
- > Built in stainless steel.
- > Welded with laser, IP68 protection.
- > Protection against voltage overload.
- > Digital output RS-485.
- > Software setting and updating through the interface series.
- > Advantages in starting, adjustment of corners and individual diagnostic .
- > Follows the EMC/ESD requirements according to EN45 501.

MAIN FEATURES

Indicator GI500



- > Electronic indicator to use with digital weighing
- > It follows rules EN45 501.
- > Graphic display.
- > Stainless steel housing
- > Excitation through red adaptor, integrated in the housing.
- > Alphanumerical keyboard of membrane.
- Software Functions**
 - > Zero.
 - > Tare.
 - > Date/Hour.
 - > Password.
 - > References File.
 - > Number plate Files.
 - > Management of weighing.
 - > Memorized Tares.
 - > Management in ways of traffic.
 - > PC connection.
- > Printing with external printer.
- > Badge / button.
- > Control of traffic lights.
- > I/O.
- > Alibi Memory.
- > Ethernet.
- > Programming of input and output conditions.

REFERENCES

Combination of digital elements

Digital cells HBM C16i model with the indicator GI500. For scales of 4 capteurs.

Digital cells HBM C16i model with the indicator GI500. For scales of 6 capteurs.

Digital cells HBM C16i model with the indicator GI500. For scales of 8 capteurs.

Price: The indicated references must be added to the total cost of all scales with GIP references that agree with the number of load cells.

Reference

C16i-GI500.4

C16i-GI500.6

C16i-GI500.8



PVC IN FACTORY CE APPROVAL

The weighbridges BPPCE and BPPSEH (concreted from factory version) can be supplied from factory verified. To order this choice, the option chosen must be the weighbridge with simple cubicle and / or large, and so the option "in factory mounted cells."

The weighbridges can be provided with verified analogical and or digital load cell along with some of our electronic indicators.

The rates shown only charge the work performed in our workshop for CE verification procedures to comply with and for issuing the certification concerning.

> CE verification with analogical GIP load cells and analogical electronic indicator supply.

To those references there must be included; the weighbridge with GIP load cells, the assembly works, and the electronic indicator chosen.

Analogical electronic indicators available:

- GI308IP54, 65, 67
- GI511PP, GI511PPST
- GI500I, GI500IST

REFERENCES

Description	Reference
CE verification reference for weighbridges with 4 load cells.	PVCE-4
CE verification reference for weighbridges with 6 load cells.	PVCE-6
CE verification reference for weighbridges with 8 load cells.	PVCE-8

> CE verification with digital GIPD load cells and digital GI500ID electronic indicator model supply.

To those references there must be included the weighbridge with GIPD load cells, the cubicle, the assembly works for GIPD installation, and the electronic indicator GI500ID.

Digital electronic indicators available:

- GI500ID
- GI500IDST

REFERENCES

Description	Reference
CE verification reference for weighbridges with 4 load cells.	PVCE-4
CE verification reference for weighbridges with 6 load cells.	PVCE-6
CE verification reference for weighbridges with 8 load cells.	PVCE-8

HBM SCALE WITH ANALOGICAL CELLS, C16 model of HBM

Increase to supply the scale with HBM analogical cells (C16A model) instead of GIP cells.

REFERENCES

Description	Reference
For scales with 4 load cells	HBM-4
For scales with 6 load cells	HBM-6
For scales with 8 load cells	HBM-8

PSC WEIGHBRIDGE SUPPLY

Decrease to supply the scale without:

- Cells
- Set of hoops.
- Low and top plates.
- Junction box.
- Specification plate.

**Price to deduct of the amount of requested scale.*

REFERENCES

Description	Reference
For scales with 4 load cells	PSC1
For scales with 6 load cells	PSC2
For scales with 8 load cells	PSC3

PSC WITH TOP PLATES FOR TOLEDO CELLS MTX or PDX

Increase for supply the scale with top plates for Toledo cells.

REFERENCES

Description	Reference
For scales with 4 load cells	PSC5
For scales with 6 load cells	PSC6
For scales with 8 load cells	PSC7



PSC WITH BOTTOM PLATES FOR TOLEDO CELLS MTX

Increase for supply the scale with bottom plates for Toledo cells MTX.

PRICES

Description	Reference
For scales with 4 load cells	PSC8
For scales with 6 load cells	PSC9
For scales with 8 load cells	PSC10

PSC WITH BOTTOM PLATES FOR TOLEDO CELLS PDX

Increase for supply the scale with bottom plates for Toledo cells PDX.

PRICES

Description	Reference
For scales with 4 load cells	PSC11
For scales with 6 load cells	PSC12
For scales with 8 load cells	PSC13

PSC SCALES WITH ZEMIC BM9H CELLS

Increase for supply the scale with Zemic BM9H cells.

REFERENCES

Description	Reference
For scales with 4 load cells	PSC14
For scales with 6 load cells	PSC15
For scales with 8 load cells	PSC16

CBV CELLS INSTALLED UNDER BEAM for BPGSMX/BPGSH

Decrease to supply the scales BPGSMX and BPGSH with cells installed under beam. Without cutting the beams.
This will give us a height of the scale of 460 mm.

**Price to deduct of the amount of requested scale.*

REFERENCES

Description	Reference
Cells installed under beam for scales of 4 cells	CBV-4
Cells installed under beam for scales of 6 cells	CBV-6
Cells installed under beam for scales of 8 cells	CBV-8

GV HOT-DIP GALVANIZING for BPPCE/BPPSE

MAIN FEATURES

Increase to supply the scales BPPCE and BPPSE hot-dip galvanised.

REFERENCES

BPPCE model		Reference	BPPSE model		Reference
6 x 3 m.		GV1	6 x 3 m.		GV10
8 x 3 m.		GV2	8 x 3 m.		GV11
10 x 3 m.		GV3	10 x 3 m.		GV12
12 x 3 m.		GV4	12 x 3 m.		GV13
14 x 3 m.		GV5	14 x 3 m.		GV14
16 x 3 m.		GV6	16 x 3 m.		GV15
18 x 3 m.		GV7	18 x 3 m.		GV16

GV CUBICLES AND RAMPS HOT-DIP GALVANIZED for BPPCE/BPPSE

MAIN FEATURES

Increase to supply the cubicles and metal ramps hot-dip galvanised. For BPPCE and BPPSE scales.

REFERENCES

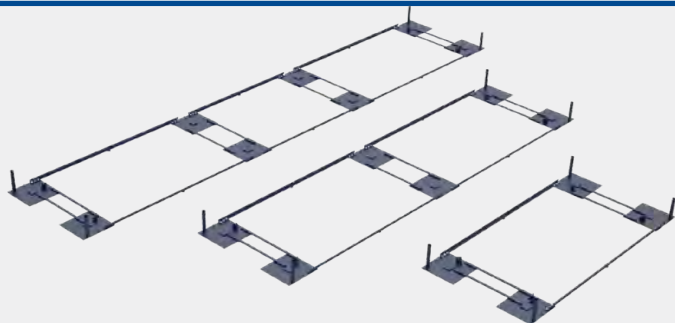
CUBICLES	Reference
Simple cubicle for scales with 4 cells	GV20
Simple cubicle for scales with 6 cells	GV21
Simple cubicle for scales with 8 cells	GV22
Large cubicle for scales with 4 cells	GV25
Large cubicle for scales with 6 cells	GV26
Large cubicle for scales with 8 cells	GV27

REFERENCES

METAL RAMPS	Reference
Metal ramps of 1500 mm	GV30
Metal ramps of 1000 mm	GV31

CV CUBICLES

for BPGSMX/BPGMO



REFERENCES

Cubicle	Reference
For scales of 4 cells	CV.4C
For scales of 6 cells	CV.6C
For scales of 8 cells	CV.8C

CVS-CV8C SIMPLE AND LARGE CUBICLES

for BPPCE/BPPSE



Simple cubicle



Large cubicle

MAIN FEATURES

- > **Simple cubicle.** The cells must be assembled on the metal sheets, which are 15 mm thick and which even include the movement limits welded in factory. This option is with cells assembled in the factory.
- > **Large cubicle.** The scale is installed on a frame of big sheets, 10 mm thick united among them and they share the effort on the ground. *Optional:* cells assembled in the factory.

REFERENCES

Description	Reference
Simple cubicle for scales with 4 cells	CVS1
Simple cubicle for scales with 6 cells	CVS2
Simple cubicle for scales with 8 cells	CVS3
Large cubicle for scales with 4 cells	CV4C
Large cubicle for scales with 6 cells	CV6C
Large cubicle for scales with 8 cells	CV8C
Large cubicle with 4 cells assembled in the factory	CV4C1
Large cubicle with 6 cells assembled in the factory	CV6C1
Large cubicle with 8 cells assembled in the factory	CV8C1

RP METAL RAMPS

for scales BPGSMX/BPPCE/
BPGMO/BPGSH/BPCTH/BPPSE

1500 mm



1000 mm

MAIN FEATURES

- > **Metal ramps 1500 mm of thickness.** The access to the weighing area is done through a pair of ramps 1500 mm thick in the entrance and/or the exit of the scale, covering the whole width of the same.
- > **Metal ramps 1000 mm of thickness.** The access to the weighing area is done through a pair of ramps of 1000 mm in width in the entrance and/or the exit of the scale, so that the central part is left free and each wheel rail of the lorries circulates in one of these stretches of 1000 mm.

REFERENCES

Description	Reference
Metal ramps 1500 mm (4 modules of 3000x1500 mm)	RP1
Metal ramps 1000 mm (4 modules of 3000x1000 mm)	RP2

SC SIMULATORS



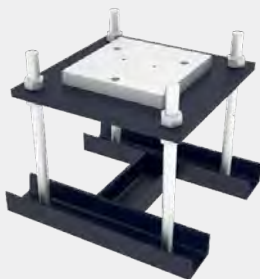
MAIN FEATURES

- > The load cell simulators can be used with GIP- and HBM C16A load cells.

REFERENCES

Description	Reference
Set load cell simulator for salances with 4 cells	SC.4
Set load cell simulator for salances with 6 cells	SC.6
Set load cell simulator for salances with 8 cells	SC.8

PAR HEIGHT-ADJUSTABLE ANCHORAGE PLATES



MAIN FEATURES

- > Height-adjustable anchorage plates for the right level of the balances while the montage and engineering works.

Note: The geometrie can be different according to the implementation of different types of weighbridges.

REFERENCES

Description	Reference
Set height-adjustable anchorage plates for balances with 4 cells.	PAR.4
Set height-adjustable anchorage plates for balances with 6 cells.	PAR.6
Set height-adjustable anchorage plates for balances with 8 cells.	PAR.8

CAB HEADBOARDS FOR SCALES



MAIN FEATURES

- > U outline of 3 metres in length to root in the entrance and exit zones of the scale.
- > It is used as a leaning point for the access ramps to the scale. The concrete or compacted earth used to built the ramps leans on its wall.

REFERENCES

Description	Reference
Set of two headboards for weighbridges.	CAB

Note: changes according to the order.

AR PERIMETER ANGLE

for building ramps in ON-GROUND scales



MAIN FEATURES

- > Two angles set L-100x10 mm with root foot to end the building of the entrance and exit of the scale

REFERENCES

Description	Reference
Set of perimeter angle for ramps	AR.2

APF PERIMETER ANGLE

for the end of the ditch in pit scales



MAIN FEATURES

- > Angles set L-100x10 mm with root foot to end the perimeter of the ditch in pit scales.

REFERENCES

Ditch dimensions	Reference
for scales 6 x 3 m	APF.6
for scales 8 x 3 m	APF.8
for scales 10 x 3 m	APF.10
for scales 12 x 3 m	APF.12
for scales 14 x 3 m	APF.14
for scales 16 x 3 m	APF.16
for scales 18 x 3 m	APF.18



OPTIONS AND ACCESSORIES

GR BEARING GUIDES

for ON-GROUND scales



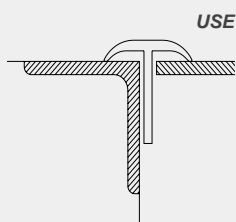
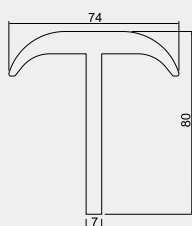
MAIN FEATURES

- > Railings with a tubular outline to guide the lorry on the bearing track.
- > For on-ground scales with a completely flat area.
- > Possibles scales: BPGMO, BPPCE, BPPSE, BPCTH and BPTSE.

REFERENCES

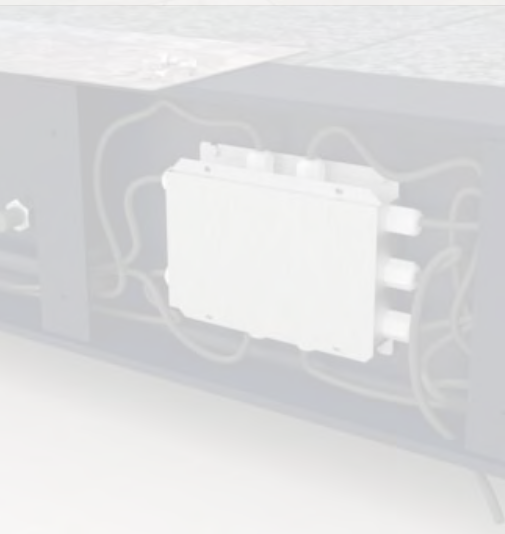
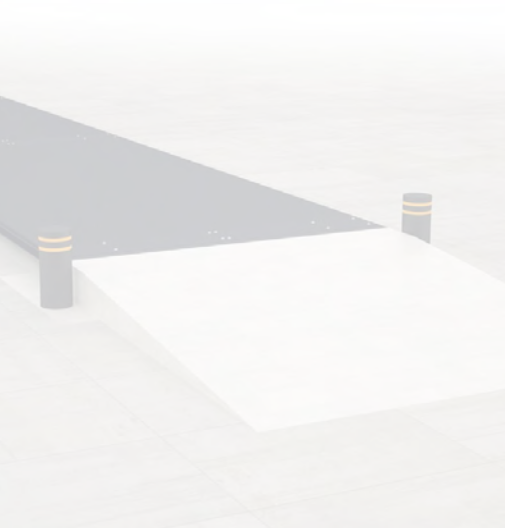
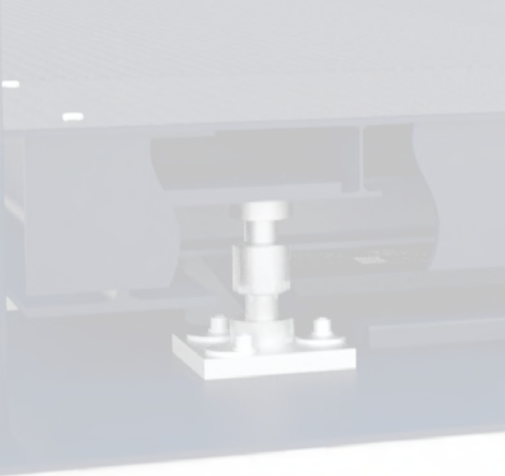
Scale length	Reference
6 m	GR.6
8 m	GR.8
10 m	GR.10
12 m	GR.12
14 m	GR.14
16 m	GR.16
18 m	GR.18

GM GOMME

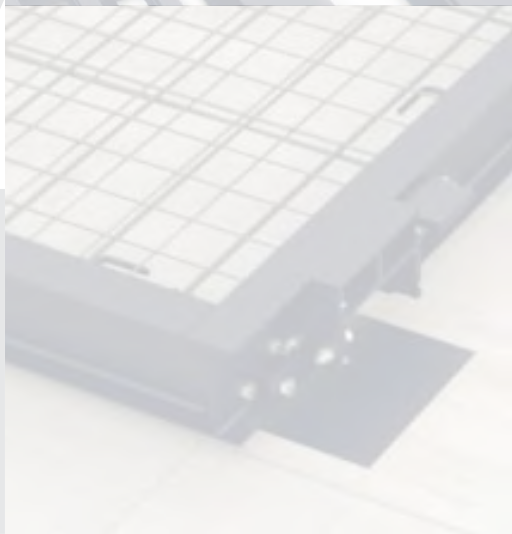
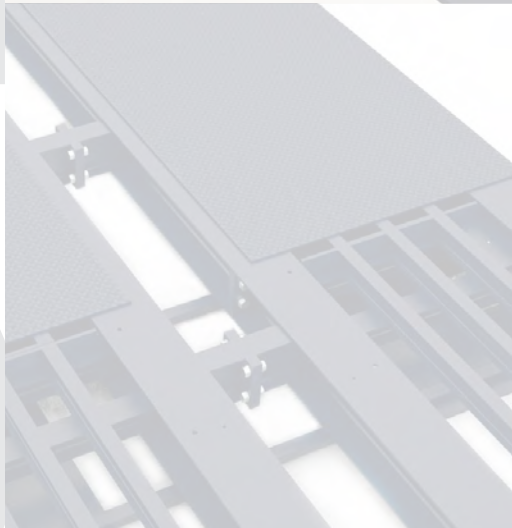
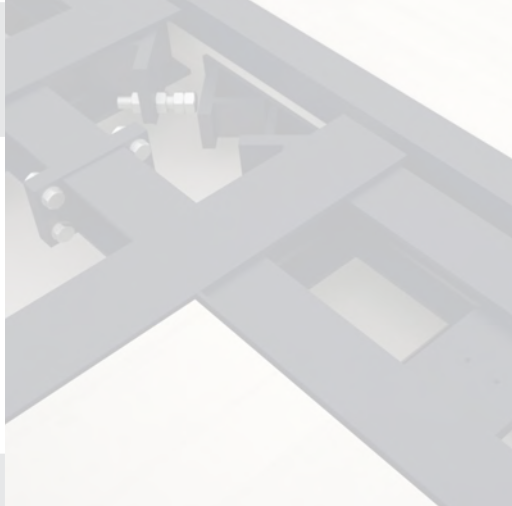


REFERENCES

Description	Reference
for scales 6 x 3 m	GM.6
for scales 8 x 3 m	GM.8
for scales 10 x 3 m	GM.10
for scales 12 x 3 m	GM.12
for scales 14 x 3 m	GM.14
for scales 16 x 3 m	GM.16
for scales 18 x 3 m	GM.18
rubber for the access und exit of balances above ground installation	GM.BS



GIROPÈS



WEIGHBRIDGES



solutions for industrial weighing

Pol. Empordà Internacional - C/de Molló, 15-16 - 17469 VILAMALLA (Girona) España
T. +34 972 527 212 - F. +34 972 527 211

giropes@giropes.com
www.giropes.com